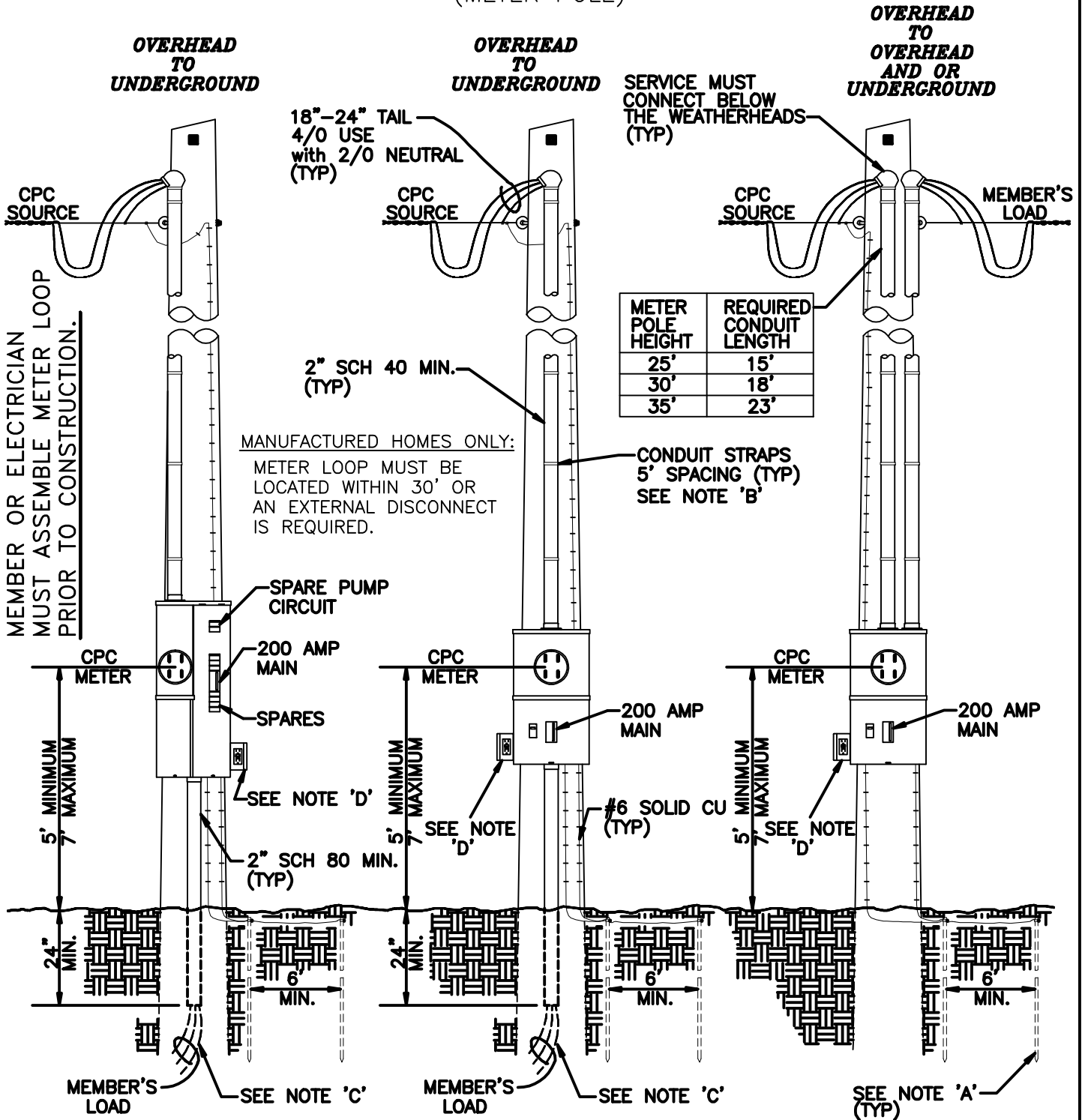


CLEARWATER POWER CO.

200 AMP METER LOOPS (MEMBER)
(METER POLE)



NOTE 'A' - MEMBER MUST PROVIDE ONE (1) 8' GROUND ROD W/#4 OR #6 COPPER GROUND WIRE.

NOTE 'B' - A CONDUIT STRAP MUST BE LOCATED WITHIN 3' OF EACH END.

NOTE 'C' - IF SERVICE IS FOR A MANUFACTURED HOME, A SEPARATE GROUND WIRE MUST BE RAN. (GREEN WIRE).

NOTE 'D' - OPTIONAL GFI OUTLET IN WEATHER TIGHT BOX - FOR TEMPORARY FOR CONSTRUCTION, ETC.